

Isoglide

Single Stage End Suction Pump

STEEL ALLOY ARRANGEMENT

The CLYDEUNION Pumps Isoglide range of horizontal long coupled or close coupled ISO 2858 standard pumps is an established end suction design range:

- 32 individual pump frame sizes divided into 4 modular shaft groupings
- Numerous sealing options available
- Back pull out design allows for easy removal of the pump rotating element without disturbing the pipe work ensuring ease of maintenance
- Material options available for non-corrosive applications (refer to 'Isoglide Cast Iron' datasheet)
- Designed for both 50Hz and 60Hz markets

TYPICAL APPLICATIONS

- Desalination
- Water Treatment, Supply and Distribution
- District Heating and District Cooling
- Irrigation
- De-watering
- Power Auxiliaries
- Paper Manufacturing
- Mining
- Metal Manufacturing
- Chemical and Petrochemical Industries
- General Industrial Applications
- Building Services

TECHNICAL DATA

Capacity: up to 1,000 m³/hr/4,400 USGPM
Delivery head: up to 200 m /670 feet
Temperature: up to 120 °C /250 °F
Speeds: up to 3,600 rpm
Flange drilling: ANSI OR BS

MATERIALS OF CONSTRUCTION & COMPONENTS:

Material Specification	Casing	Impeller	Shaft
Spec A8	Stainless Steel	Stainless Steel	Super Duplex
Spec D1	Duplex	Duplex	Super Duplex
Spec D2	Super Duplex	Super Duplex	Super Duplex

Please Note: A wide range of additional materials is available on request

Technical Data



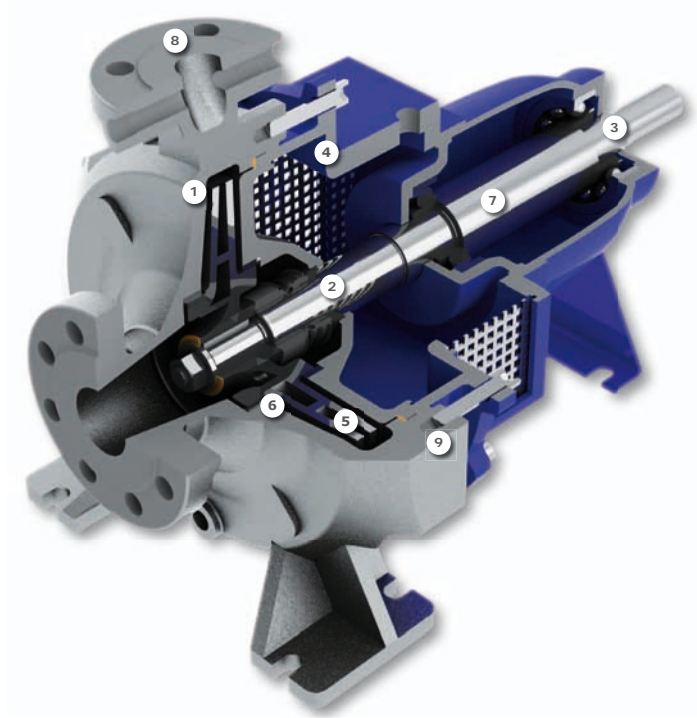
Pictured: Isoglide Super Duplex render view



Isoglide

Single Stage End Suction Pump

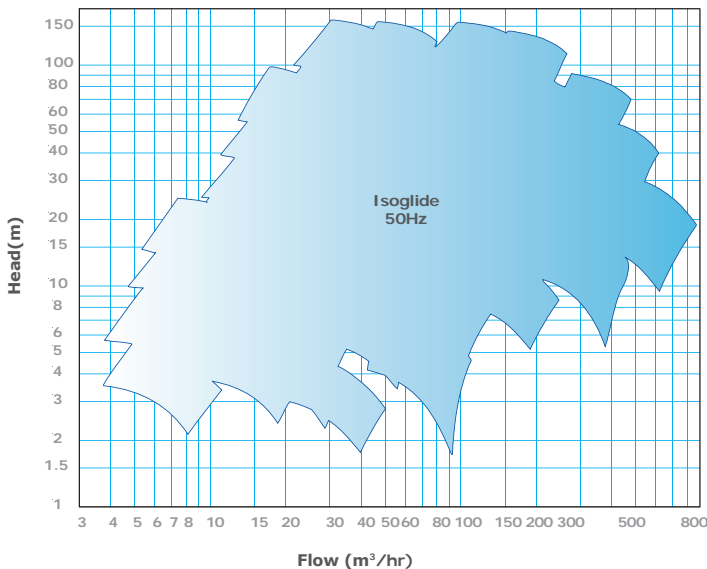
STEEL ALLOY ARRANGEMENT



- 1 LOW ENERGY COSTS**
Hydraulic design provides high efficiency, low NPSH and stable characteristics
- 2 OPTIMUM SEAL PERFORMANCE**
Choice of seal - packed gland, single, double and cartridge options available
- 3 EXTENDED BEARING LIFE**
Choice of bearing - single or double, grease or oil lubricated (only for long-coupled bearing)
- 4 EASE OF MAINTENANCE**
Back pull out design allows full access without disturbing site pipe work or driver
- 5 LOW POWER CONSUMPTION**
Shrouded impeller design provides high efficiency and low hydraulic thrust
- 6 WEAR OPTIONS**
Casing and impeller wear rings and shaft sleeve available as optional configurations
- 7 MODULAR DESIGN**
Minimises spares holding of back pull out components
- 8 CENTRE LINE DISCHARGE**
Self venting casing design prevents air entrapment in the top of the casing
- 9 SIMPLIFIED BUILD PROCEDURES**
Spigot design facilitates self setting axial clearance

Features & Benefits

RANGE COVERAGE CHART: Isoglide 50Hz 2 & 4 Pole



RANGE COVERAGE CHART: Isoglide 60Hz 2 & 4 Pole

